

Puls und Tempo in der Musik:

A:

60 bpm = beats per minute
120 bpm

B:

$\text{♩} = 90$

$\text{♩} = 60$

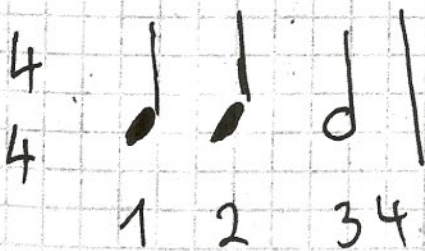
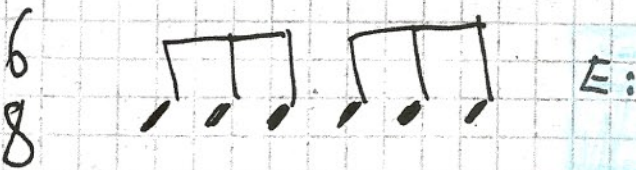
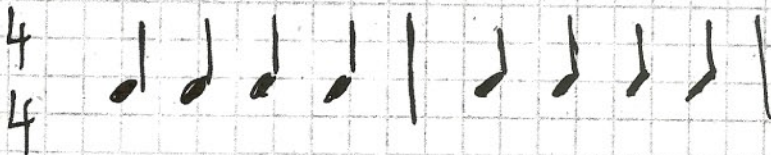
$\text{♩} = 120$

C:

Takt: D:

$\frac{4}{4} \rightarrow$ Anzahl der Schläge

$\frac{4}{4} \rightarrow$ Notenwerte



F: